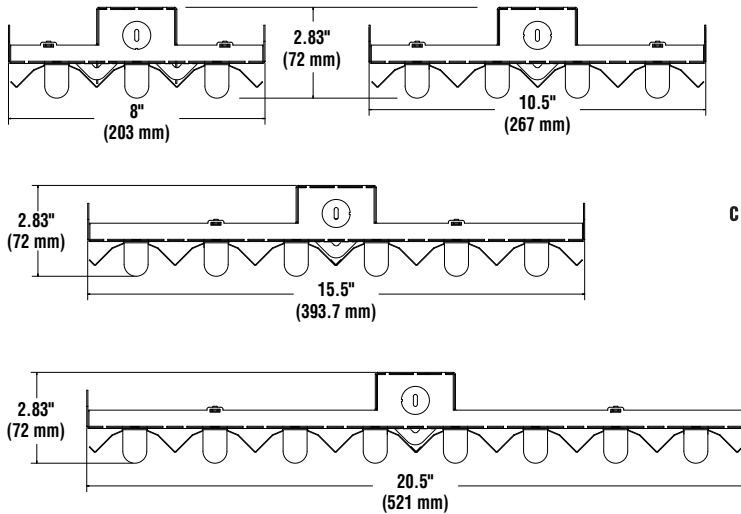




DIMENSIONS



PRODUCT HIGHLIGHTS

- High efficiency T5 & T8 lamps for significant energy savings over HID high bays.
- Unit may be pendant, chain, hub, or surface mounted
- Hub mounting option allows for direct replacement of HID High Bays
- Unitized housing for ease in installation
- Open fixture design promotes improved lumen performance
- Minimum fixture weight - less load on building structure
- Tool-less reflector removal promotes ease of maintenance

CONSTRUCTION - Fixture housing, end sections, and lampholders are made of code gauge die formed steel. Standard reflector is code gauge die formed specular, aluminum finish, providing 95% reflectivity.

ELECTRICAL - All devices UL/CUL listed. Suitable for damp locations. Damp location emergency pack must be specified separately. Ballasts are energy-saving, solid-state electronic. Ballasts and lampholders replaceable without removing from ceiling.

FINISH - All metal parts and housing are finished with high reflectance, lighting fixture white polyester powder painted after fabrication.

PHOTOMETRICS - Please visit our web site at www.lsi-industries.com for detailed photometric data.

LUMINAIRE ORDERING INFORMATION

TYPICAL ORDER EXAMPLE: **LIL 4 54 SSO OCS 120**

Prefix	Lamps	Lamp Type	Ballasts	Options	Voltage
LIL	2 3 4 6 8	54 - 54W 46" T5 HO	SS5HO - T5HO Program Rapid Start SSO - T8 Instant Start SSOD - T8 Dimming (specify type) SSOHL - T8 High Power Factor SSOR - T8 Rapid Start	F - Fusing EM - Emergency Pack EMDL - Emergency Pack - Damp Location OCS - Occupancy Sensor ¹ (specify type) WHT - White Reflector HUB - Hub Mounting Hardware 3/4" NPS LM - Lamps Included (specify type) UPL - Uplight JP - Job Pack NYC - 20 Ga. Housing	120 - 120V 277 - 277V 347 - 347V UE - Universal Electronic (120-277V)
	4 6 8	32 - 32W 48" T8	(For dual ballasts add "2". Example: SS02. Specify if special configuration required.)	(See Fluorescent Highbay Accessories for more options)	

FOOTNOTES:

1 - Can only be used with Programmed Start ballast.

ACCESSORY ORDERING INFORMATION (Accessories are field installed)
This fixture accepts all standard "V" Hook hanging accessories
SEE FLUORESCENT HIGHBAY ACCESSORIES PAGE

