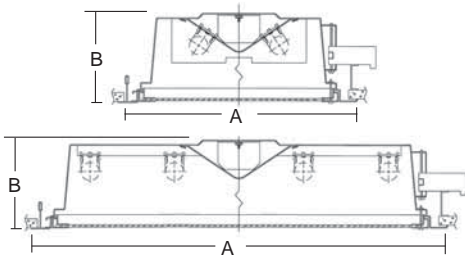


DIMENSIONS



DIMENSIONS FOR 47G

Fixture	W X L (A)	HEIGHT (B)
1x4	11-3/4" x 47-3/4" (298x1213mm)	4-1/2" (114mm)
2x2	23-3/4" x 23-3/4" (603x603mm)	4-1/2" (114mm)
2x4	23-3/4" x 47-3/4" (603x1213mm)	4-1/2" (114mm)

DIMENSIONS FOR 47F

Fixture	W X L (A)	HEIGHT (B)	ROUGH IN
1x4	13" x 49" (330x1245mm)	4-1/2" (114mm)	12" x 48-1/2" (305x1232mm)
2x2	25" x 25" (635x635mm)	4-1/2" (114mm)	24" x 24-1/2" (610x622mm)
2x4	25" x 49" (635x1245mm)	4-1/2" (114mm)	24" x 48-1/2" (610x1232mm)



APPLICATION - Series 47 fixtures are provided with sturdy 20 gauge CRS housings, and is well suited for use in areas where there is a concern for vandalism or accidental breakage. Series 47 can be specified in 1x4, 2x2, and 2x4 configuration for use with Biax, T5 or T8 lamps.

HOUSING - Die formed 20 ga crs. with white polyester powder coated finish.

DOOR FRAME - Die formed 20 ga crs with mitered and welded corners. Inner frame prevents lens from being forced upward. Door frame is retained by tamper proof screws opposite T-hinges.

SHIELDING - .125" thick low brightness polycarbonate diffuser, (optional shielding available).

BALLAST - Solid state electronic.

SOCKETS - Polycarbonate construction.

LAMPS - Biax or T8 lamps available (by others).

MOUNTING - Quick set supplied on all flanged units. T-bar grid clips supplied on all grid units.

PHOTOMETRICS - Please visit our web site at www.lsi-industries.com for detailed photometric data.

LISTING - UL Listed to U.S. and Canadian safety standards. Suitable for damp locations. IBEW Union made.

FASTENERS - Spanner head tamper-proof screws are shipped standard. Other head types available (see options).

LUMINAIRE ORDERING INFORMATION

TYPICAL ORDER EXAMPLE: **LI472 F 2 17 SSOD EM UE**

Prefix	Mounting	Lamps	Lamp Type	Ballasts	Options	Voltage
LI471 (1x4)	G - Grid F - Flange	2	32 - 32W 48" T8 28 - 28W 45" T5 54 - 54W 45" T5HO	SSB - Biax Instant Start SSBR - Biax Program Rapid Start SS5 - T5 Instant Start SS5R - T5 Rapid Start SS5D - T5 Dimming (Specify Type) SS5HO - T5 High Output SSOD - T8 Dimming (Specify Type) SSOL - T8 Low Watt SSOHL - T8 High Power Factor SSOR - T8 Rapid Start SSO10 - T8 <10% THD Instant Start	CH - Clutch Head CPA - Center Pin Allen Head TORX - Torx Head F - Fusing EM - Emergency Pack NL - Night Light (13W CFL) FWA - Flat White Acrylic GASK - Gasketed Door K12 - .125 Prismatic Acrylic K19 - .156 Prismatic Acrylic .125 - .125 Clear Polycarbonate .375 - .375 Clear Polycarbonate	120 - 120V 277 - 277V 347 - 347V UE - Universal Electronic (120-277V)
LI472 (2x2)		1 2 3 4	40BX - 40W Biax 50BX - 50W Biax 55BX - 55W Biax 17 - 17W 24" T8 U31 - 31W 1-5/8" U			
LI472 (2x4)		1 2 3 4 5 6	32 - 32W 48" T8 28 - 28W 45" T5 54 - 54W 45" T5HO			

1 - T8/T5 Straight Lamp Only